



Introducing Maple Leaf Homes **Signature Bungalow**

This beautiful 3 bedroom and 2 bathroom home has an open concept floor plan with various access points to a large covered porch. This home offers a spacious mudroom, custom tiled shower alcove, beverage station and large island for entertaining along with many other upgrades

3 BEDROOMS
2 BATHROOMS
68' X 32'

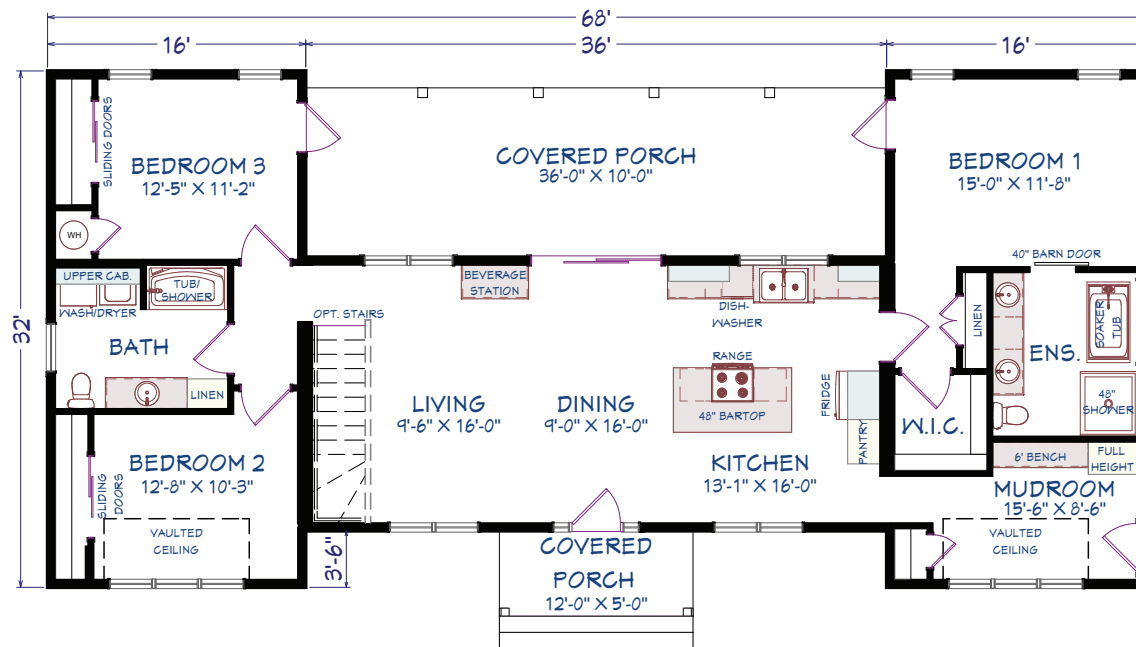
1636 FINISHED SF
360 SF PORCH
1996 TOTAL SF

Exterior:

- 7/12 Center Module & 10/12 Bedroom Module Roof Pitch
- 9 ft. Walls in Center Module, 8 ft. Walls in Bedroom Modules
- R22 Wall Insulation / R31 Floor Insulation / R50 Roof Insulation
- Board and Batten Siding – Vinyl Shake Siding at Peak of Gables - Colour "Sapphire Blue" -
- Kholtech Front Door – Fiberglass Fir Wood Door w/ Sidelites and Transom, Stained Chestnut
- Black Windows by Kholtech Windows & Entrance Systems
- 8 ft. Kohltech Sliding Patio Door – With Sliding Screen Door
- Iron Ore Trim and Fascia
- Timber Framed Front Entry
- Large Covered Porch
- Black Aluminum Railing

Interior:

- Custom Entry Bench
- Interior Knob Style Door Hardware, Weiser "Troy" – Colour "Iron Black"
- Crackfilled and Primed Throughout – Smooth Painted Ceiling
- Quartz Countertops in Kitchen – Colour "Swiss Peaks"
- Upgrade Glenwood Cabinets – Kitchen "Mysterious AF-565", Bathroom and Entry "White"
- Tile Backsplash, 3"x6" Subway Tile, Herringbone Pattern – Colour "White"
- 84" Island c/w 48" Bartop
- Pantry Cabinet
- Beverage Station – Colour "Mysterious AF-565"
- Whirlpool Stainless Steel Appliance Package
- Optional Stairs to Basement
- Vaulted Ceilings in Bedroom 2 and Mudroom
- Cabinets Above Washer/Dryer – Colour "White"
- Custom Wall Panelling in Master Bedroom – Painted "Mysterious AF-565"
- Wainscoting in Mudroom – Painted "White"
- 2 Panel Interior Doors – Colour "White"
- 40" Barn Style Door to Ensuite – Colour "Mysterious Grey"
- Mirrored Sliding Doors in Bedrooms 2 and 3 closets
- Custom Square Edge Pine Trim Package Throughout – Colour "White"
- Upgrade Chrome Faucet Package Throughout
- MAAX 48" Shower with Glass Panel Door c/w Tiled Alcove – Ensuite
- MAAX Louie Freestanding Soaker Tub
- Upgrade LED Lighting Throughout



3 BEDROOMS, 2 BATHROOMS
 1636 FINISHED SF
 360 PORCH SF
 1996 TOTAL SF

*We build **your** home, **your** way.*

Customization at its best, you have the option of choosing from our large selection of some of the best home designs in the industry. From traditional Mini-Homes to our newest Retreat design, the quality care and service of the Maple Leaf Team will exceed your expectations. Once you have chosen your design, our design consultant will assist you in customizing your new home to suit your personal style and taste. Anything from siding colour to kitchen cabinets will be tailored just for you! Start envisioning your dream home today! For more information on this or any other Maple Leaf Home, visit our website at mapleleafhomes.ca for a retailer in your area.

MAPLE LEAF  HOMES

655 WILSEY RD, FREDERICTON NB E3B 7K3 • 506.459.1335 • MAPLELEAFHOMES.CA

